

# Swallow's Eye View

Floor Guide of Tokyo Tech Museum

燕 瞰 図

The Tokyo Tech seal features a swallow which symbolizes good luck in Japan and illustrates how our students confidently soar out into the world upon graduation. Hence the swallow's eye view of the Museum.



Ceramic statue of Gottfried Wagener

9 Small magneto using Ferrite OP magnet

10 Ferrite used for syncro-sheet, Ferrite used for magnetic recording



First Cu-Zn soft ferrite

15 Tokyo Tech's first supercomputer ETA 10

16 Frequency standard system part using a quartz oscillator

17 400MHz single mode optical line terminal, optical communication system was installed between the Ookayama and Suzukakedai Campuses in 1982



Tokyo Tech's first supercomputer ETA 10

19

18

Robots displayed in the special exhibition room B

18 Robot: Active Cord Mechanism No. 3, ACM III

19 Quadruped wall climbing robot, NINJA-I and NINJA-II

20 Robot: GAWALK Japan's first six legged robot

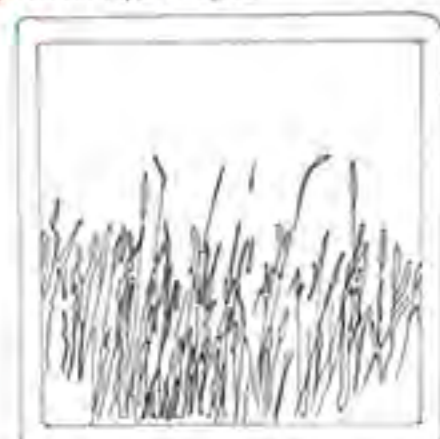
21 Articulated body mobile robot, KORYU-II

22 Quadruped walking machine, TITAN-IV

23 Transmission hologram, works of art including works by Setsuko Ishii and Rudie Berkout

24 Setsuko Ishii's One Day, in the Highland Cylindrical hologram, Centennial Hall

25 Reflection-type hologram



Setsuko Ishii's One Day, in the Highland, 1993

26 Parsons turbine, manufactured by C.A. Parsons and Company circa 1987

Textile machines used for training students

27 Flat carding machine

28 Miniature ring spinning frame

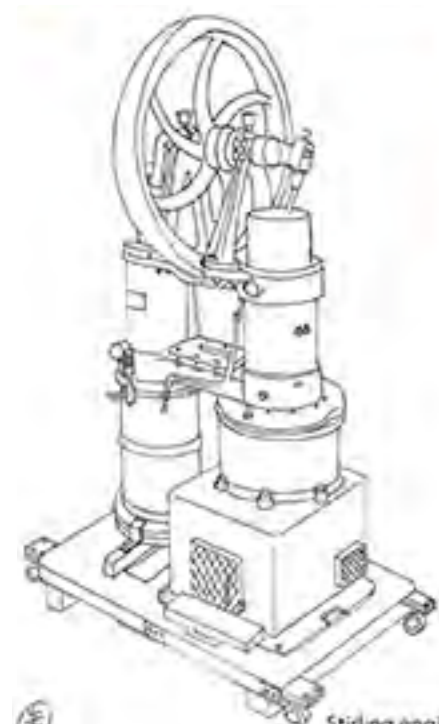
29 Weft spool winder

30 Howa Machinery Company's N-model loom

31 Tape weaving loom

32 Dobcross loom

33 One of the world's oldest workable Stirling engines



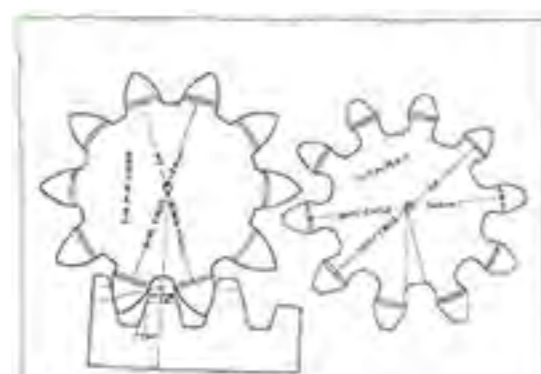
Stirling engine

34 Shaking table for reproducing the ground motion experienced during the 1923 Great Kanto Earthquake

35 Honda's thermobalance

36 Model of heavy-ion liner accelerator

37 Model of addendum-modified gears using a rack cutter, Takashi Nakada used this model in explaining his research to the Japanese emperor on the occasion of receiving the Japan Academy Prize



Model of addendum-modified gears using a rack cutter

8 Kiyoshi Seike, architect

7 Yoshino Taniguchi, architect

4

5

2

3

1

6

7

8

9

10

11

12

13

14

15

16

17

18

19

20

21

22

23

24

25

26

27

28

29

30

31

32

33

34

35

36

37

38

39

40

41

42

43

44

45

46

47

48

49

50

51

52

53

54

55

56

57

58

59

60

61

62

63

64

65

66

67

68

69

70

71

72

73

74

75

76

77

78

79

80

81

82

83

84

85

86

87

88

89

90

91

92

93

94

95

96

97

98

99

100

101

102

103

104

105

106

107

108

109

110

111

112

113

114

115

116

117

118

119

120

121

122

123

124

125

126

127

128

129

130

131

132

133

134

135

136

137

138

139

140

141

142

143

144

145

146

147

148

149

150

151

152

153

154

155

156

157

158

159

160

161

162

163

164

165

166

167

168

169

170

171

172

173

174

175

176

177

178

179

180

181

182

183

184

185

186

187

188

189

190

191

192

193

194

195

196

197

198

199

200

201

202

203

204

205

206

207

208

209

210

211

212

213

214

215

216

217

218

219

220

221

222

223

224

225

226

227

228

229

230

231

232

233

234

235

236

237

238

239

240

241

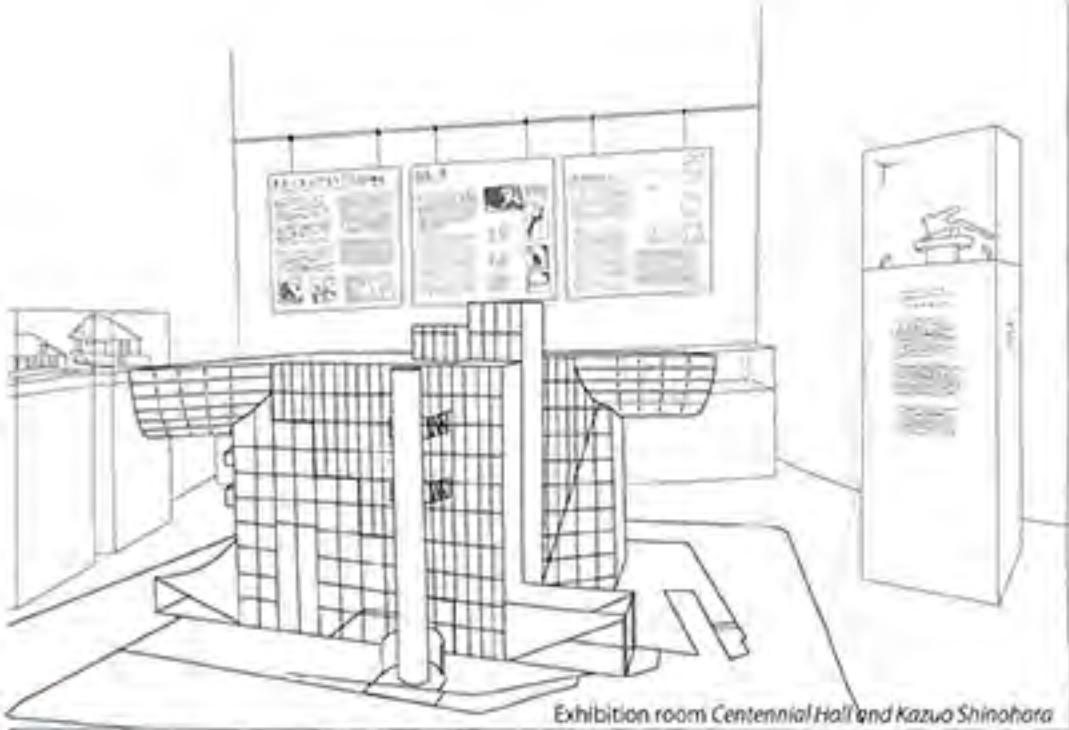
242

243

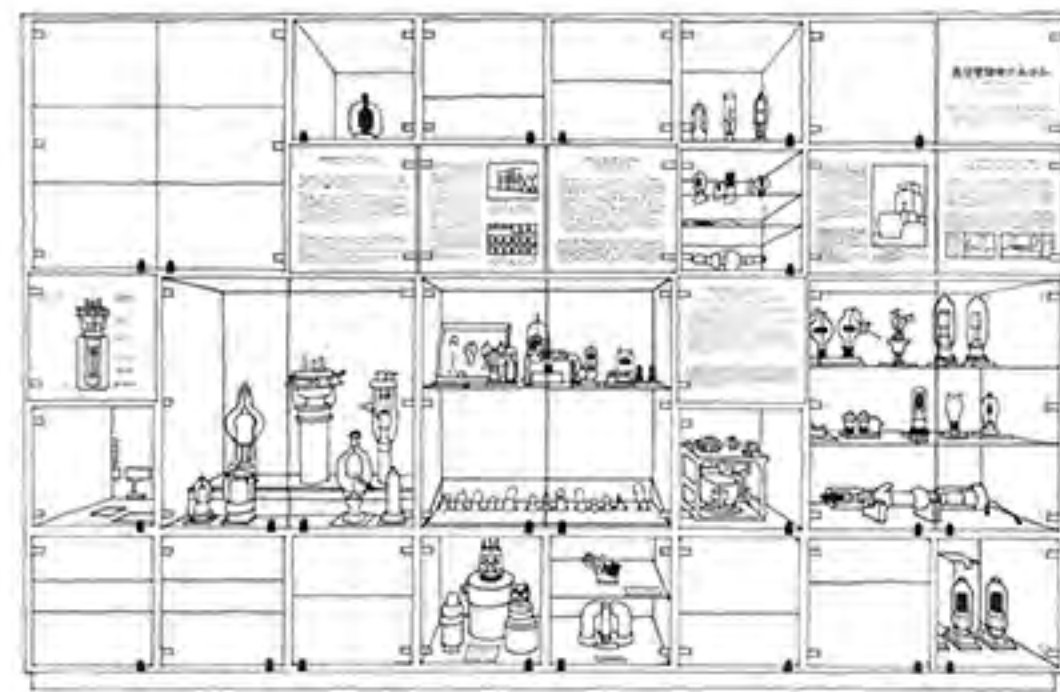
244

245

246



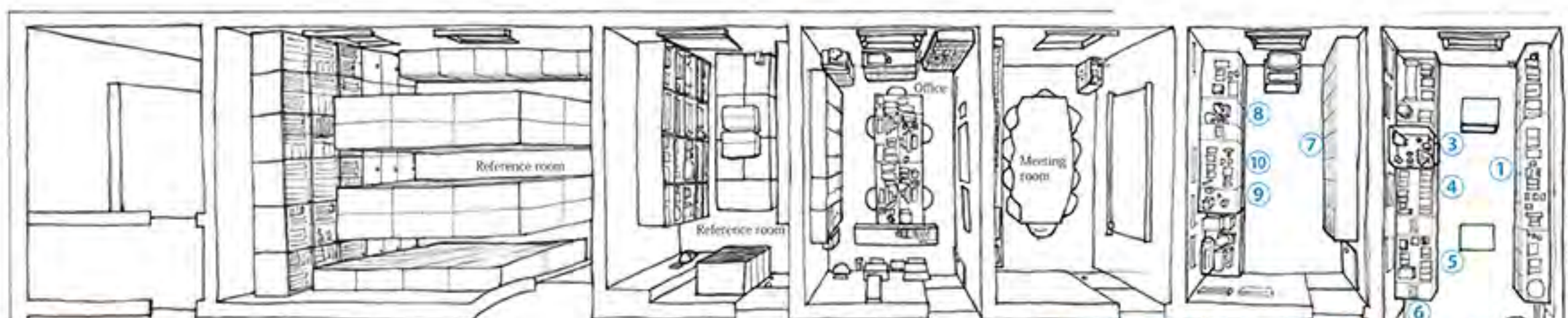
Exhibition room Centennial Hall and Kazuo Shinohara



Collection of vacuum tubes

- 7 Vacuum tubes developed and used at Tokyo Tech
- 8 Model of quartz-crystal cutting units and Japan's first quartz clock display
- 9 Single mode optical fiber communication system
- 10 Vertical Cavity Surface Emitting Laser (VCSEL), VCSEL is applied to a laser mouse

- 11 Flower petal (chair)
- 12 High noon (chair)
- 13 Architecture Biennale in Venice, 2010 Trophy of the Golden Lion award
- 14 Model of Centennial Hall
- 15 Drawings of Centennial Hall
- 16 Model of private homes designed by Kazuo Shinohara: Umbrella House, 1951; House in white, 1966; Tanigawa House, 1974; House in Uehara, 1976; House in Ashitaka Sueno, 1977; House on a curved road in Uehara, 1978



Emergency stairs

Centennial Hall and Kazuo Shinohara

Electrical - Optical Communication

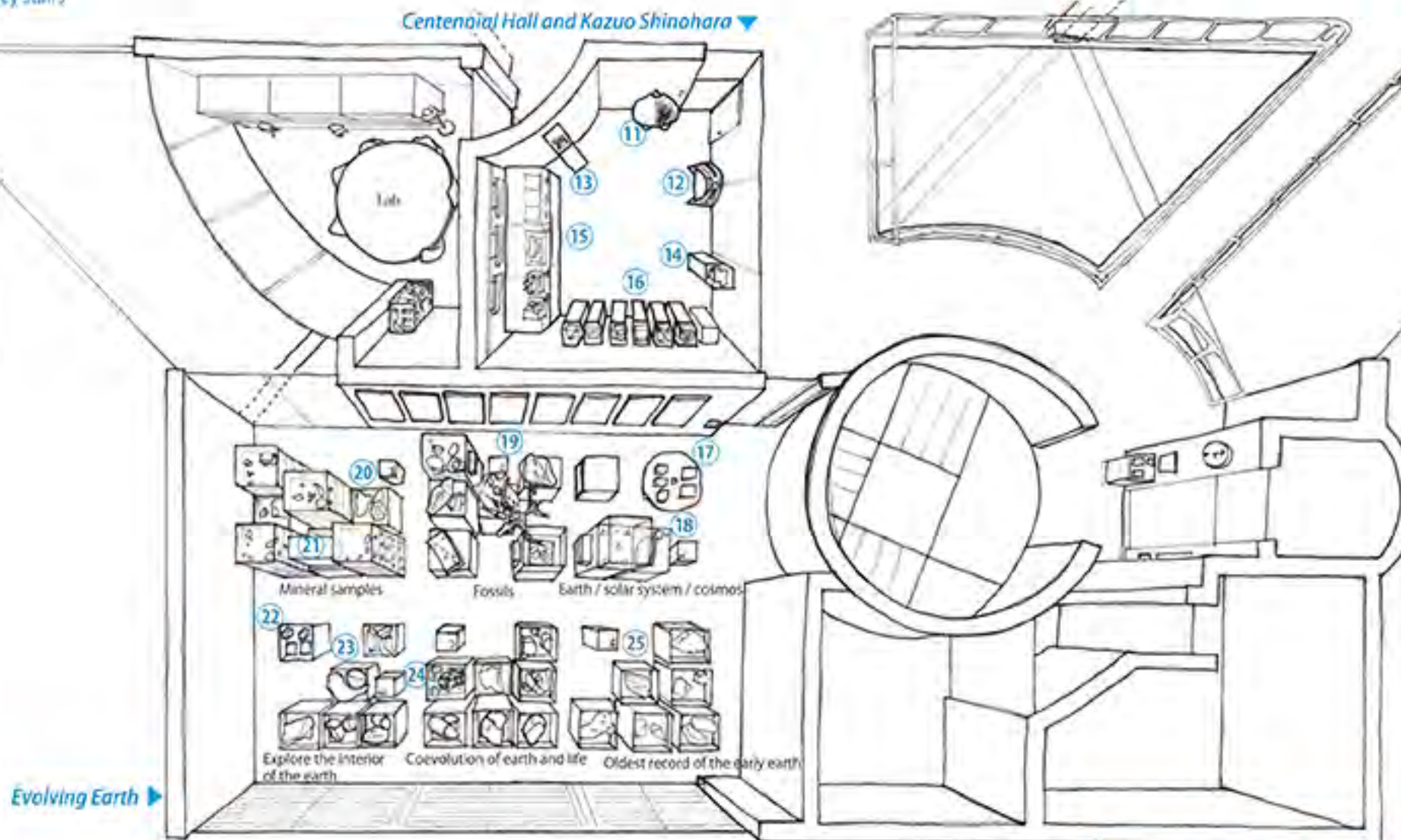
Tokyo Vocational School - Tokyo Institute of Technology

## Swallow's Eye View

Floor Guide of Tokyo Tech Museum

燕 瞰 図

The Tokyo Tech seal features a swallow which symbolizes good luck in Japan and illustrates how our students confidently soar into the world upon graduation. Hence the swallow's eye view of the Museum.



Evolving Earth

Exhibition rooms, 2nd floor

- 1 Tokyo Tech historical materials: Gottfried Wagener on the establishment of a dyeing school, Badges of staff and students, pocket notebook for staff and library books
- 2 Statue of Seichi Tejima
- 3 Seichi Tejima: pioneer advocate of technical education in Japan
- 4 Taizo Masaki: first principal of Tokyo Vocational School
- 5 Kosoku Wada: leader of the post-World War II university reform
- 6 Old photos of Tokyo Tech (touch-screen monitor)



Exhibition room Evolving Earth

- 17 Petrified wood
- 18 Simulations to reproduce planet formation
- 19 Trilobite, Allosaurus (replica), Pterosaur, Tapejara Wellhofer (replica), Ammonite, Dinosaur egg
- 20 Amethyst
- 21 Fluorescent minerals
- 22 Diamond-anvil cell, high-pressure apparatus which recreates the conditions at the interior of the earth in a lab
- 23 Volcanic bomb and Pele's hair
- 24 Fluid inclusion viewing under a microscope
- 25 Oldest mineral on the earth, 4 billion years old



Exhibition room Tokyo Vocational School - Tokyo Institute of Technology